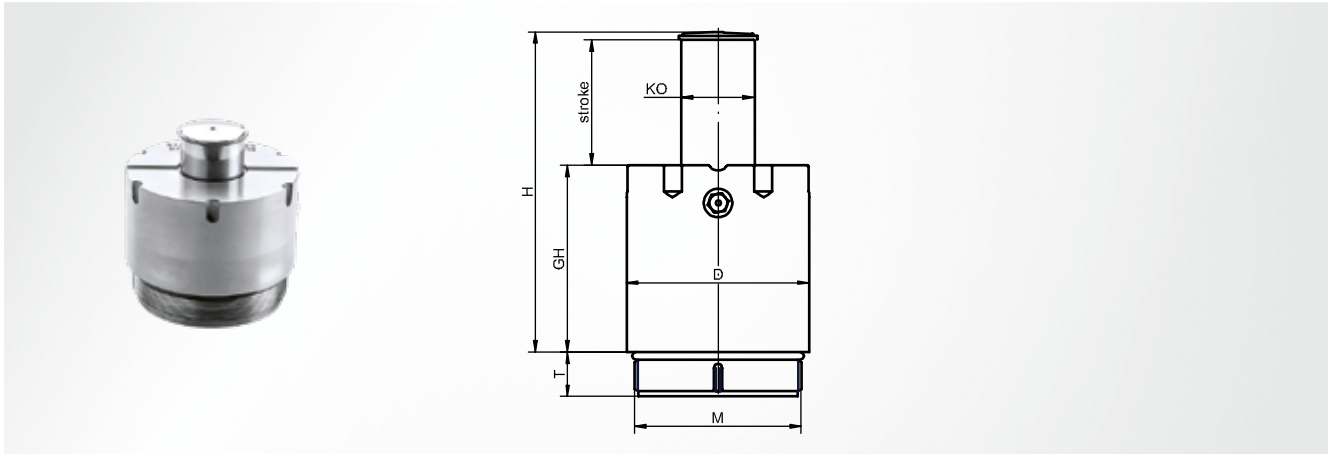




high



### Delivery

will be supplied unfilled

### Note

Initial force at 110 bar filling pressure

### Installation instruction

Case height changes with the stroke; is used when the thickness of the backing plate is limited and the assembly height can be compensated

Cylinder type	D	KO	M	T	GH	H	Stroke	Item number
005	42	12	M36 x 2	15.0	31.3	45.5	12.5	ST8841-1 -005 x 012
					43.8	70.5	25.0	ST8841-1 -005 x 025
					56.8	96.5	38.0	ST8841-1 -005 x 038
					68.8	120.5	50.0	ST8841-1 -005 x 050
					93.8	170.5	75.0	ST8841-1 -005 x 075
					118.8	220.5	100.0	ST8841-1 -005 x 100
010	54	22	M48 x 2	15.5	46.8	73.5	25.0	ST8841-1 -010 x 025
					59.8	99.5	38.0	ST8841-1 -010 x 038
					71.8	123.5	50.0	ST8841-1 -010 x 050
					96.8	173.5	75.0	ST8841-1 -010 x 075
					121.8	223.5	100.0	ST8841-1 -010 x 100
					171.8	323.5	150.0	ST8841-1 -010 x 150
025	70	28	M64 x 2	17.0	46.8	73.0	25.0	ST8841-1 -025 x 025
					59.8	99.0	38.0	ST8841-1 -025 x 038
					71.8	123.0	50.0	ST8841-1 -025 x 050
					96.8	173.0	75.0	ST8841-1 -025 x 075
					121.8	223.0	100.0	ST8841-1 -025 x 100
					171.8	323.0	150.0	ST8841-1 -025 x 150
035	88	28	M80 x 2	19.5	56.5	83.5	25.0	ST8841-1 -035 x 025
					69.5	109.5	38.0	ST8841-1 -035 x 038
					81.5	133.5	50.0	ST8841-1 -035 x 050
					106.5	183.5	75.0	ST8841-1 -035 x 075
					131.5	233.5	100.0	ST8841-1 -035 x 100
					181.5	333.5	150.0	ST8841-1 -035 x 150
055	108	40	M100 x 2	25.0	61.5	88.5	25.0	ST8841-1 -055 x 025
					74.5	114.5	38.0	ST8841-1 -055 x 038
					86.5	138.5	50.0	ST8841-1 -055 x 050
					111.5	188.5	75.0	ST8841-1 -055 x 075
					136.5	238.5	100.0	ST8841-1 -055 x 100
					186.5	338.5	150.0	ST8841-1 -055 x 150
100	146	50	M130 x 2	27.0	66.5	93.5	25.0	ST8841-1 -100 x 025
					79.5	119.5	38.0	ST8841-1 -100 x 038
					91.5	143.5	50.0	ST8841-1 -100 x 050

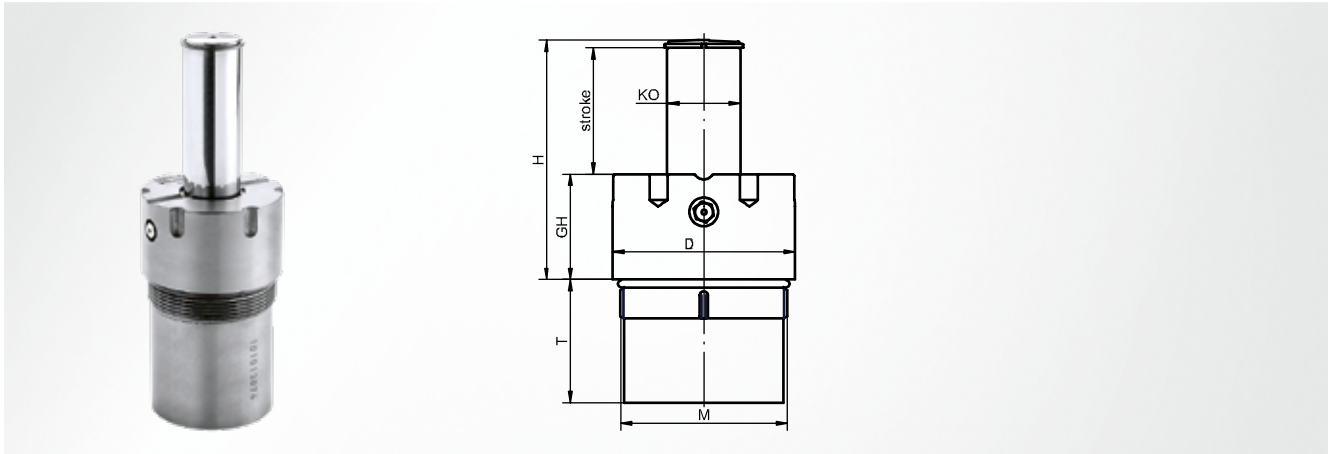
# ST8841-1 Manifold cylinder

high

Cylinder type	D	KO	M	T	GH	H	Stroke	Item number
100	146	50	M130 x 2	27.0	116.5	193.5	75.0	ST8841-1 -100 x 075
					141.5	243.5	100.0	ST8841-1 -100 x 100
					191.5	343.5	150.0	ST8841-1 -100 x 150

# ST8841-2 Manifold cylinder

normal



**Delivery**

will be supplied unfilled

**Note**

Initial force at 110 bar filling pressure

**Installation instruction**

Casing installation depth changes with the stroke; is used when the assembly height is limited but the backing plate can be chosen with an appropriate thickness

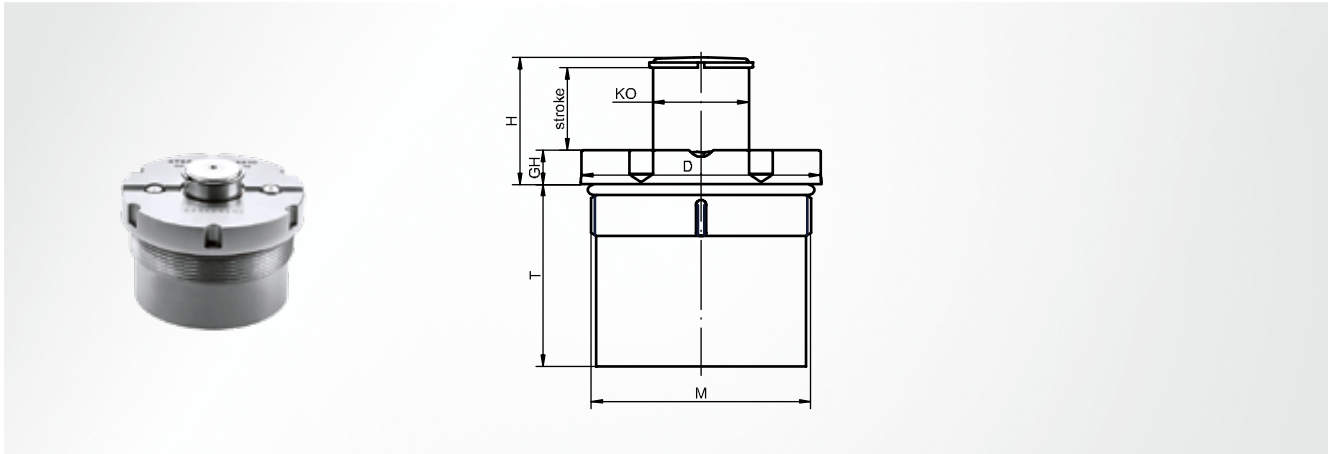
Cylinder type	D	KO	M	GH	H	Stroke	T	Item number
005	42	12	M36 x 2	40.5	54.5	12.5	14.5	ST8841-2 -005 x 012
					67.0	25.0	18.3	ST8841-2 -005 x 025
					80.0	38.0	31.3	ST8841-2 -005 x 038
					92.0	50.0	43.3	ST8841-2 -005 x 050
					117.0	75.0	68.3	ST8841-2 -005 x 075
					142.0	100.0	93.3	ST8841-2 -005 x 100
010	54	22	M48 x 2	40.5	67.0	25.0	21.8	ST8841-2 -010 x 025
					80.0	38.0	34.8	ST8841-2 -010 x 038
					92.0	50.0	46.8	ST8841-2 -010 x 050
					117.0	75.0	71.8	ST8841-2 -010 x 075
					142.0	100.0	96.8	ST8841-2 -010 x 100
					192.0	150.0	146.8	ST8841-2 -010 x 150
025	70	28	M64 x 2	40.5	67.0	25.0	22.3	ST8841-2 -025 x 025
					80.0	38.0	35.3	ST8841-2 -025 x 038
					92.0	50.0	47.3	ST8841-2 -025 x 050
					117.0	75.0	72.3	ST8841-2 -025 x 075
					142.0	100.0	97.3	ST8841-2 -025 x 100
					192.0	150.0	147.3	ST8841-2 -025 x 150
035	88	28	M80 x 2	49.5	76.5	25.0	26.5	ST8841-2 -035 x 025
					89.5	38.0	39.5	ST8841-2 -035 x 038
					101.5	50.0	51.5	ST8841-2 -035 x 050
					126.5	75.0	76.5	ST8841-2 -035 x 075
					151.5	100.0	101.5	ST8841-2 -035 x 100
					201.5	150.0	151.5	ST8841-2 -035 x 150
055	108	40	M100 x 2	52.5	79.5	25.0	34.0	ST8841-2 -055 x 025
					92.5	38.0	47.0	ST8841-2 -055 x 038
					104.5	50.0	59.0	ST8841-2 -055 x 050
					129.5	75.0	84.0	ST8841-2 -055 x 075
					154.5	100.0	109.0	ST8841-2 -055 x 100
					204.5	150.0	159.0	ST8841-2 -055 x 150
100	146	50	M130 x 2	62.5	89.5	25.0	31.0	ST8841-2 -100 x 025
					102.5	38.0	44.0	ST8841-2 -100 x 038
					114.5	50.0	56.0	ST8841-2 -100 x 050

# ST8841-2 Manifold cylinder

normal

Cylinder type	D	KO	M	GH	H	Stroke	T	Item number
100	146	50	M130 x 2	62.5	139.5	75.0	81.0	ST8841-2 <b>-100 x 075</b>
					164.5	100.0	106.0	ST8841-2 <b>-100 x 100</b>
					214.5	150.0	156.0	ST8841-2 <b>-100 x 150</b>

low



### Delivery

will be supplied unfilled

### Note

Initial force at 110 bar filling pressure

### Installation instruction

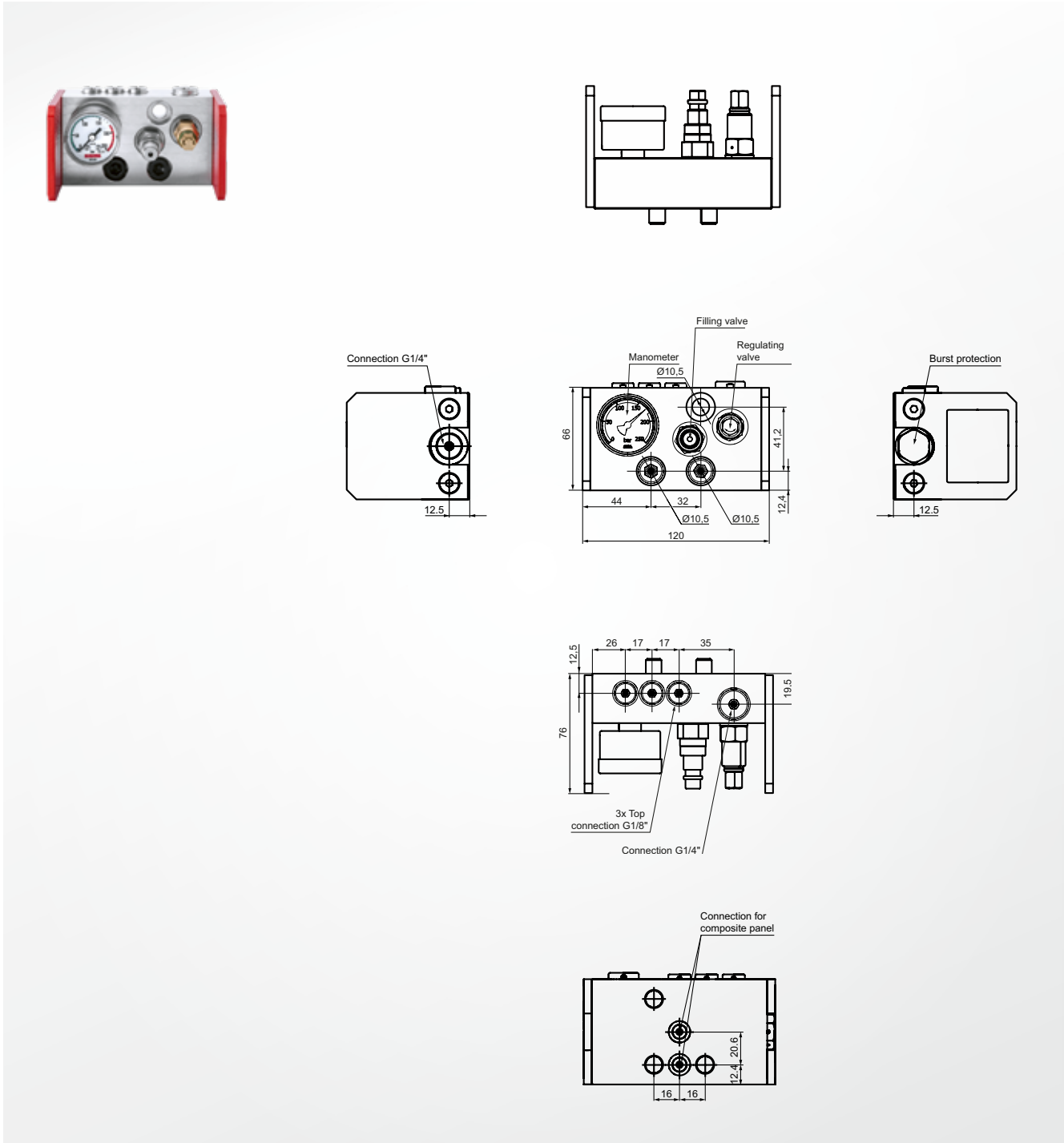
Casing installation depth changes with the stroke; is used mainly for small strokes and wherever the smallest assembly heights are required.

Cylinder type	D	KO	M	GH	H	Stroke	T	Item number
005	42	12	M36 x 2	10	17.7	6	29.8	ST8841-3 -005 x 006
					21.7	10	33.8	ST8841-3 -005 x 010
					26.7	15	38.8	ST8841-3 -005 x 015
					31.7	20	43.8	ST8841-3 -005 x 020
					36.7	25	48.8	ST8841-3 -005 x 025
010	54	22	M48 x 2	10	17.0	6	33.3	ST8841-3 -010 x 006
					21.0	10	37.3	ST8841-3 -010 x 010
					26.0	15	42.3	ST8841-3 -010 x 015
					31.0	20	47.3	ST8841-3 -010 x 020
					36.0	25	52.3	ST8841-3 -010 x 025
025	70	28	M64 x 2	10	18.0	6	34.0	ST8841-3 -025 x 006
					22.0	10	38.0	ST8841-3 -025 x 010
					27.0	15	43.0	ST8841-3 -025 x 015
					32.0	20	48.0	ST8841-3 -025 x 020
					37.0	25	53.0	ST8841-3 -025 x 025
035	88	28	M80 x 2	14	22.0	6	38.0	ST8841-3 -035 x 006
					26.0	10	42.0	ST8841-3 -035 x 010
					31.0	15	47.0	ST8841-3 -035 x 015
					36.0	20	52.0	ST8841-3 -035 x 020
					41.0	25	57.0	ST8841-3 -035 x 025
055	108	40	M100 x 2	14	23.0	6	44.5	ST8841-3 -055 x 006
					27.0	10	48.5	ST8841-3 -055 x 010
					32.0	15	53.5	ST8841-3 -055 x 015
					37.0	20	58.5	ST8841-3 -055 x 020
					42.0	25	63.5	ST8841-3 -055 x 025
100	146	50	M130 x 2	20	28.0	6	54.5	ST8841-3 -100 x 006
					32.0	10	58.5	ST8841-3 -100 x 010
					37.0	15	63.5	ST8841-3 -100 x 015
					42.0	20	68.5	ST8841-3 -100 x 020
					47.0	25	73.5	ST8841-3 -100 x 025

# ST8845-01-01 Control panel

**STEINEL®**

for manifold plates, with burst protection, standard



## Burst protection

integrated

## Burst pressure

180 bar

## Mounting screw

2x M10 x 30

## Connection

3x G1/8"; 2x G1/4"; 2x prepared connections for manifold plates (closed); connection for pressure controller ST8845-DW250W2

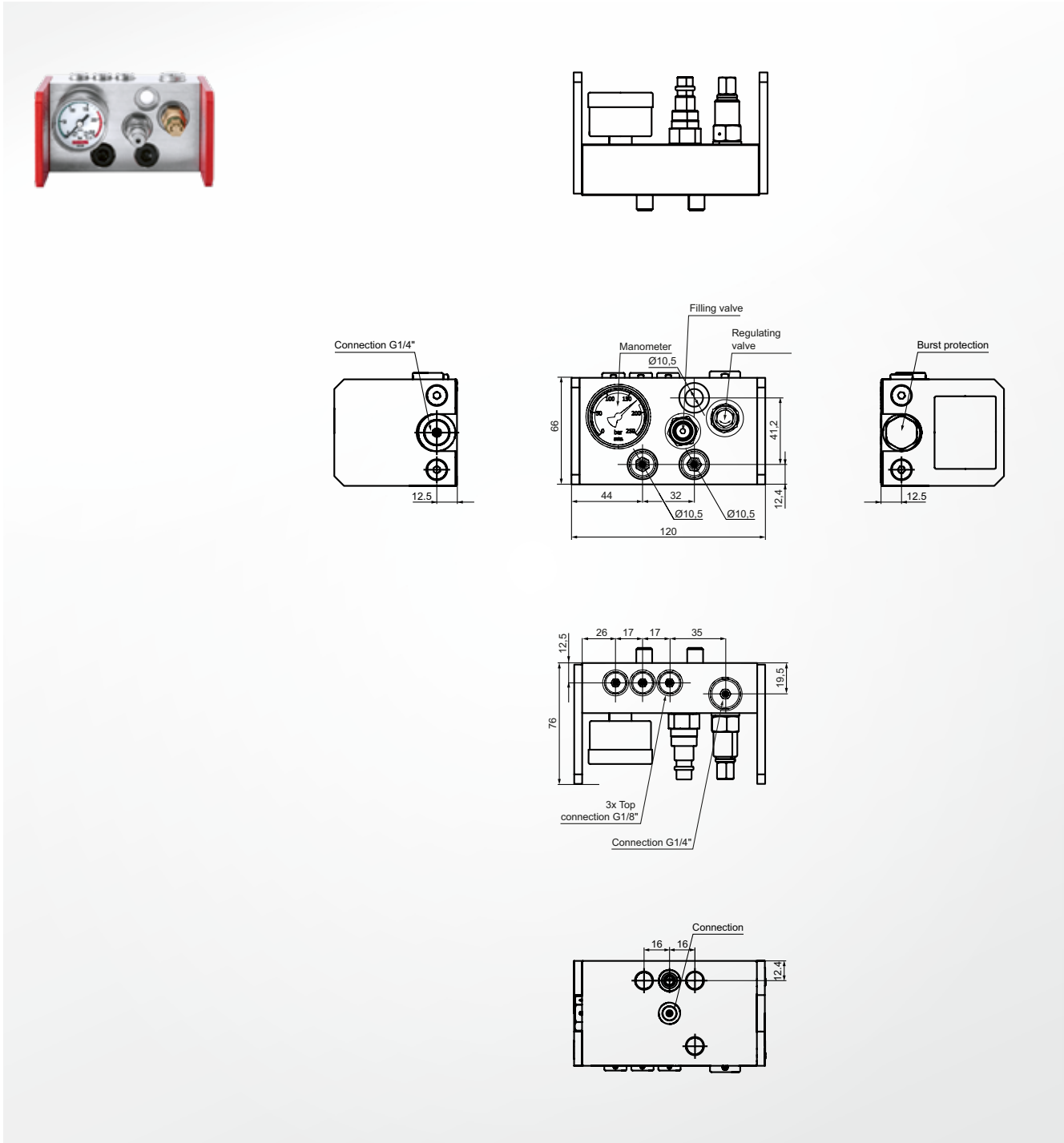
## Item number

ST8845-01-01

# ST8845-32-01 Control panel

**STEINEL®**

32 mm, for manifold plates, with burst protection, standard



## Burst protection

integrated

## Burst pressure

180 bar

## Installation instruction

for attachment/fitting to manifold plates = 32 mm

## Mounting screw

2x M10 x 30

## Connection

3x G1/8"; 2x G1/4"; 2 x prepared connections for manifold plates (1x open at the bottom); connection for pressure controller ST8845-DW250W2

## Item number

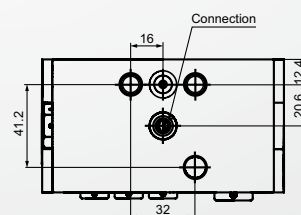
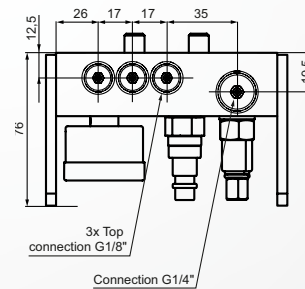
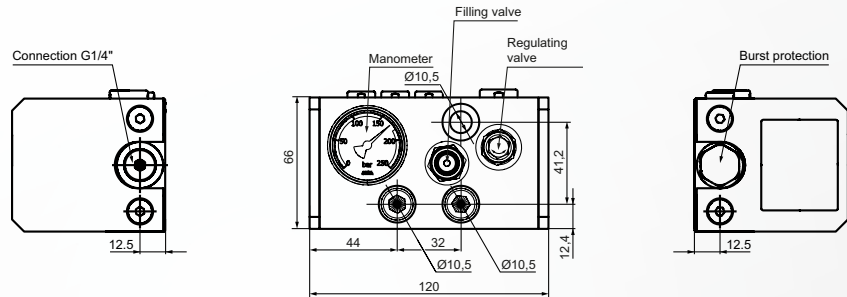
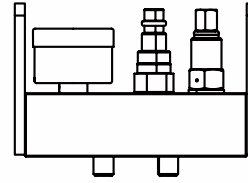
ST8845-32-01



# ST8845-80-01 Control panel

**STEINEL®**

80 mm, for manifold plates, with burst protection, standard



## Burst protection

integrated

## Burst pressure

180 bar

## Installation instruction

for attachment/fitting to manifold plates = 80 mm

## Mounting screw

2x M10 x 30

## Connection

3x G1/8"; 2x G1/4"; 2 x prepared connections for manifold plates (1x open at the top); connection for pressure controller ST8845-DW250W2

## Item number

ST8845-80-01

Tapping  
units

Module  
system

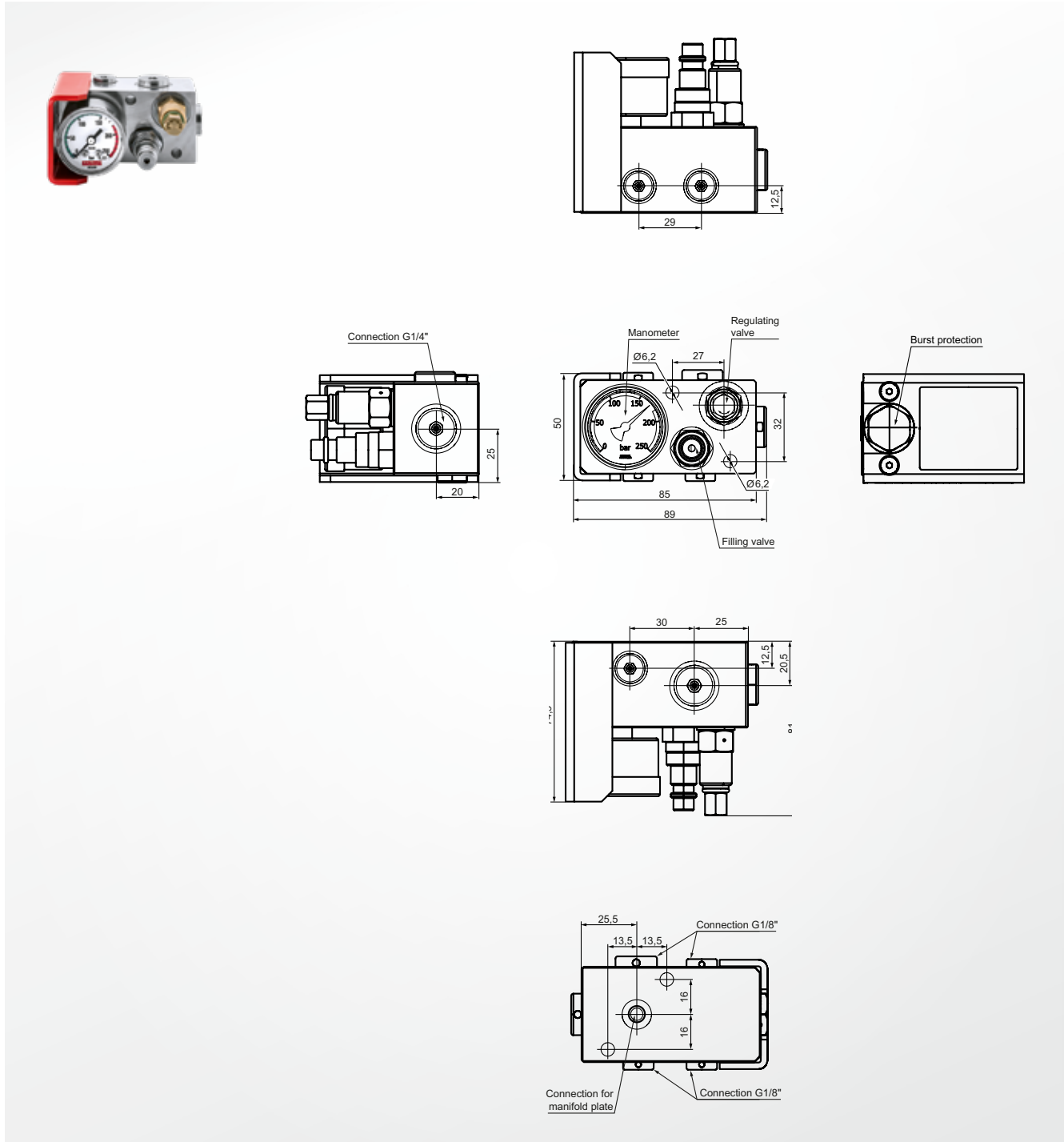
Machine  
elements

Accessories

# ST8845-8 Control panel

**STEINEL®**

for manifold plates, mini, with burst protection



## Burst protection

integrated

## Burst pressure

180 bar

## Installation instruction

for attachment/fitting to manifold plates = 80 mm

## Mounting screw

2x M6 x 50

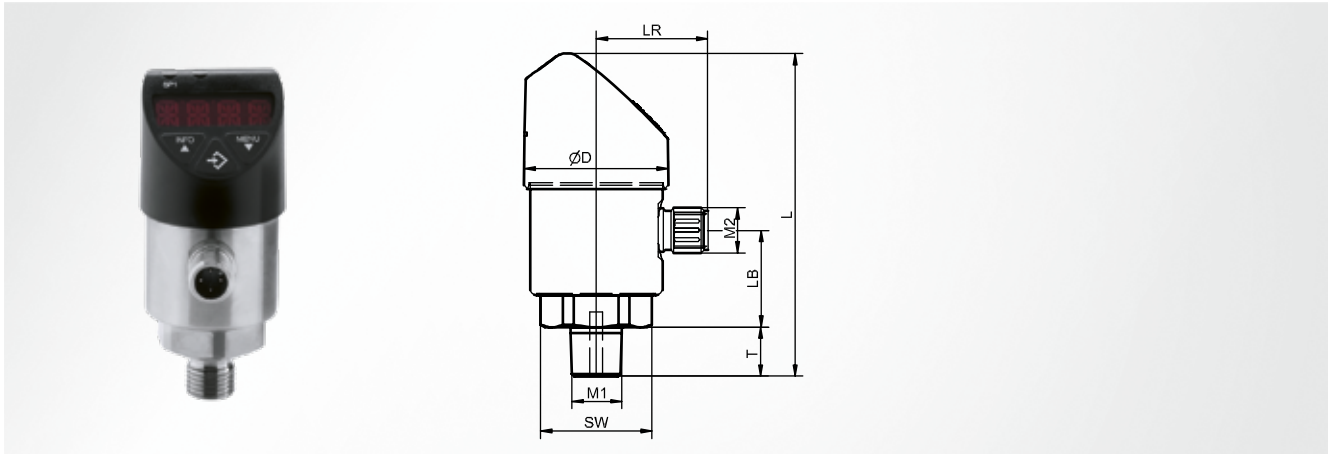
## Connection

3x G1/8"; 2x G1/4"; 1x prepared connection for manifold plates; connection for pressure controller ST8845-DW250W2

## Item number

ST8845-8

## pressure controller

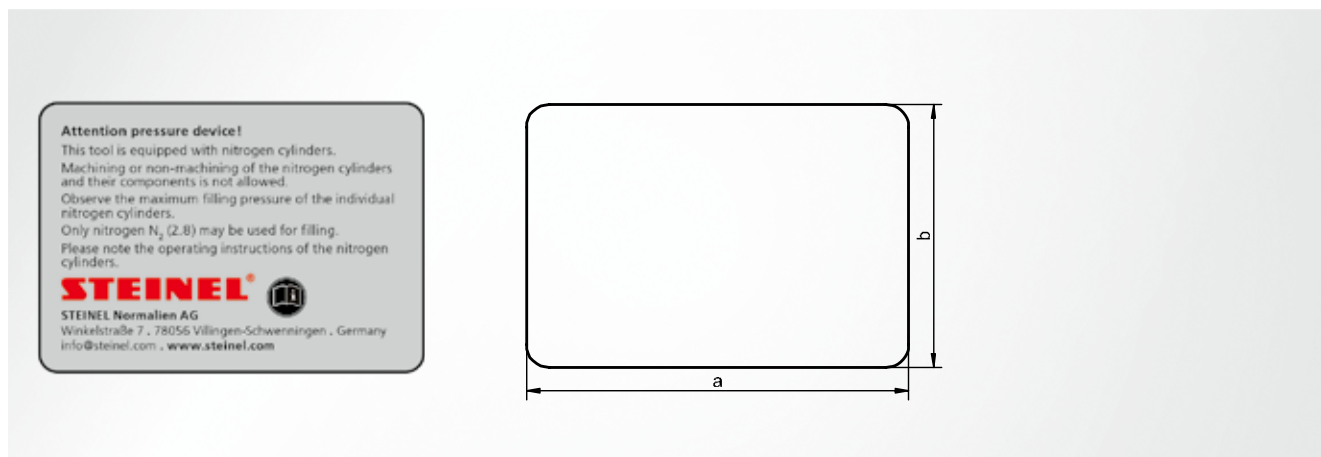


### Note

with a switch outlet 0...10 V; switching to p or n potential;  
 IO-Link: without; power supply: DC 15...35 V;  
 permissible temperature for medium: -20 ... +85 °C;  
 electrical connection: circular connector M12 x 1 (4-pin);  
 electrical output assignment: U+=1, U-=3, S+=2, SP1=4;  
 accuracy:  $\pm 0.5\%$  of span

D	adjustment range	T	LB	LR	SW	M <sub>1</sub>	M <sub>2</sub>	L	Item number
~ 38	0...250	14	26.0	29.5	27	G1/4	M12 x 1	86	ST8845 - DW250W2
~ 38	0...600	14	26.0	29.5	27	G1/4	M12 x 1	86	ST8845 - DW600W2





a	b	Language	Item number
50	35	german	SZ8099 -002
		englisch	SZ8099 -102
		french	SZ8099 -202
105	75	german	SZ8099 -001
		englisch	SZ8099 -101
		french	SZ8099 -201
150	110	german	SZ8099 -003
		englisch	SZ8099 -103
		french	SZ8099 -203

# ST8841-DS Gasket kit

for manifold cylinder



## Scope of supply

Scraper; piston seal; piston guide; O-ring; rod guide;  
high-performance oil

Compatibel cylinder	Item number
ST8841-1-005, ST8841-2-005, ST8841-3-005	ST8841 <b>-005-DS</b>
ST8841-1-010, ST8841-2-010, ST8841-3-010	ST8841 <b>-010-DS</b>
ST8841-1-025, ST8841-2-025, ST8841-3-025	ST8841 <b>-025-DS</b>

Compatibel cylinder	Item number
ST8841-1-035, ST8841-2-035, ST8841-3-035	ST8841 <b>-035-DS</b>
ST8841-1-055, ST8841-2-055, ST8841-3-055	ST8841 <b>-055-DS</b>
ST8841-1-100, ST8841-2-100, ST8841-3-100	ST8841 <b>-100-DS</b>

# ST8841-ZB Accessory kit

for manifold cylinder



## Scope of supply

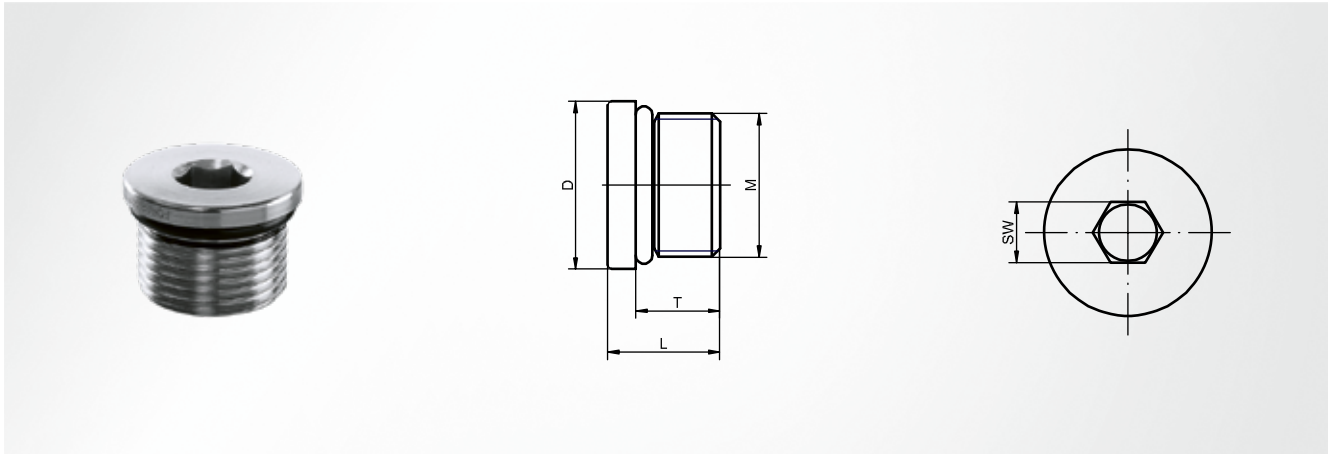
Bleed valve; lubricating nipple; lock ring

Compatibel cylinder	Item number
ST8841-1-005, ST8841-2-005	ST8841 <b>-1-005-ZB</b>
ST8841-1-010, ST8841-2-010	ST8841 <b>-1-010-ZB</b>
ST8841-1-025, ST8841-2-025	ST8841 <b>-1-025-ZB</b>
ST8841-1-035, ST8841-2-035	ST8841 <b>-1-035-ZB</b>

Compatibel cylinder	Item number
ST8841-1-055, ST8841-2-055	ST8841 <b>-1-055-ZB</b>
ST8841-1-100, ST8841-2-100	ST8841 <b>-1-100-ZB</b>
ST8841-3-003	ST8841 <b>-3-005-ZB</b>
ST8841-3-010	ST8841 <b>-3-010-ZB</b>

# ST8842 Sealing plug

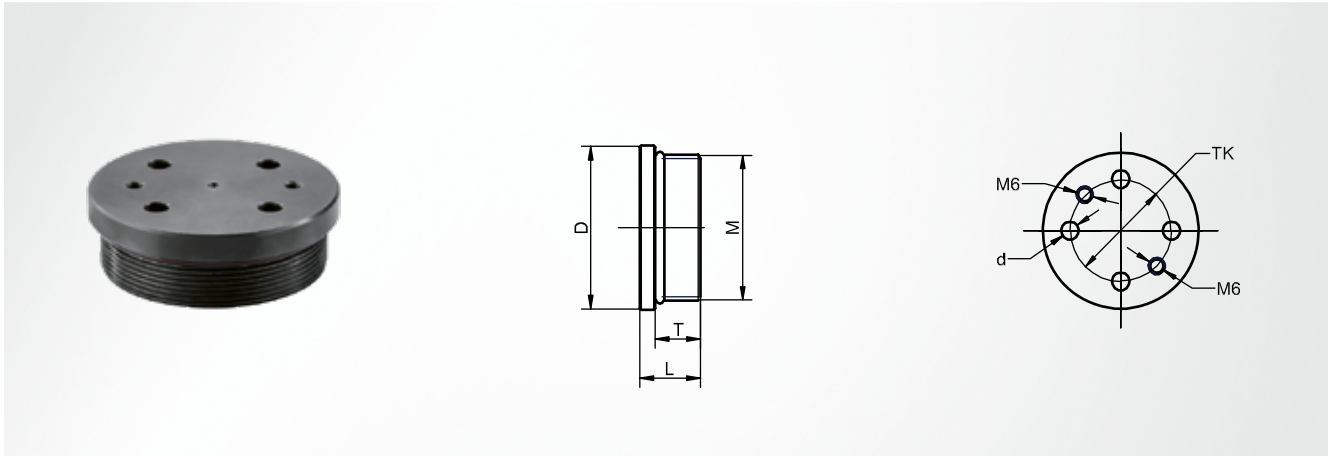
with six pans creux



## Note

is used for sealing the volume or connecting holes

D	M	L	SW	Torque Nm	Bore hole diameter	Circular area cm <sup>2</sup>	T	Item number
16	1/2"-20 UNF	12.0	5	40	10	0.785	9.0	ST8842 -012
19	M14 x 1,5	14.0	6	45	12	2.011	11.0	ST8842 -014
22	3/4"-16 UNF	15.0	8	55	16	1.131	12.0	ST8842 -016
27	M20 x 1,5	18.0	10	70	16	2.545	14.0	ST8842 -020
32	M27 x 2	22.5	12	160	24	4.524	18.5	ST8842 -027



## Note

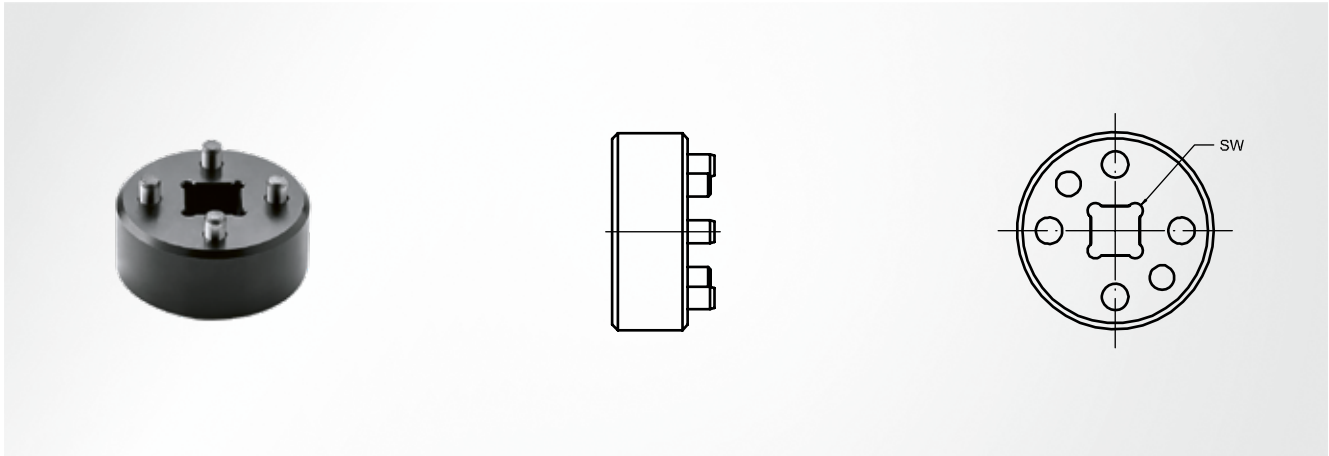
is used for sealing the volume or connecting holes

D	M	d	T	TK	Torque Nm	Bore hole diameter	Circular area cm <sup>2</sup>	L	Item number
42	M36 x 2	5.2	15	25	300	33	8.553	20	ST8842 <b>-036</b>
48	M42 x 2	5.2	15	30	330	39	11.946	20	ST8842 <b>-042</b>
54	M48 x 2	6.2	15	35	440	44	15.904	20	ST8842 <b>-048</b>
70	M64 x 2	6.2	15	45	440	60	28.274	20	ST8842 <b>-064</b>
88	M80 x 2	8.2	20	55	800	76	45.365	30	ST8842 <b>-080</b>
108	M100 x 2	8.2	20	70	1000	96	72.382	30	ST8842 <b>-100</b>
145	M130 x 2	8.2	20	90	1200	126	124.69	30	ST8842 <b>-130</b>



# ST8842-WKZ-5 Assembly tool

for sealing plug

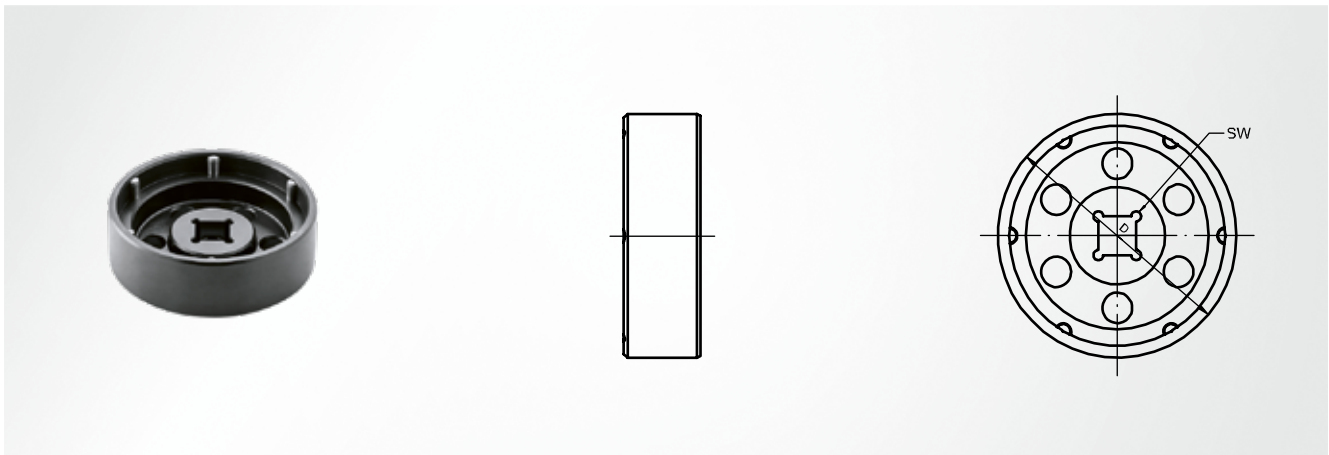


M	SW	Item number
M36 x 2	12.7	ST8842 - <b>WKZ-5-036</b>
M42 x 2	12.7	ST8842 - <b>WKZ-5-042</b>
M48 x 2	12.7	ST8842 - <b>WKZ-5-048</b>
M64 x 2	19.0	ST8842 - <b>WKZ-5-064</b>

M	SW	Item number
M80 x 2	19.0	ST8842 - <b>WKZ-5-080</b>
M100 x 2	19.0	ST8842 - <b>WKZ-5-100</b>
M130 x 2	19.0	ST8842 - <b>WKZ-5-130</b>

# ST8841-WKZ-3 Socket

for manifold cylinder



**Note**

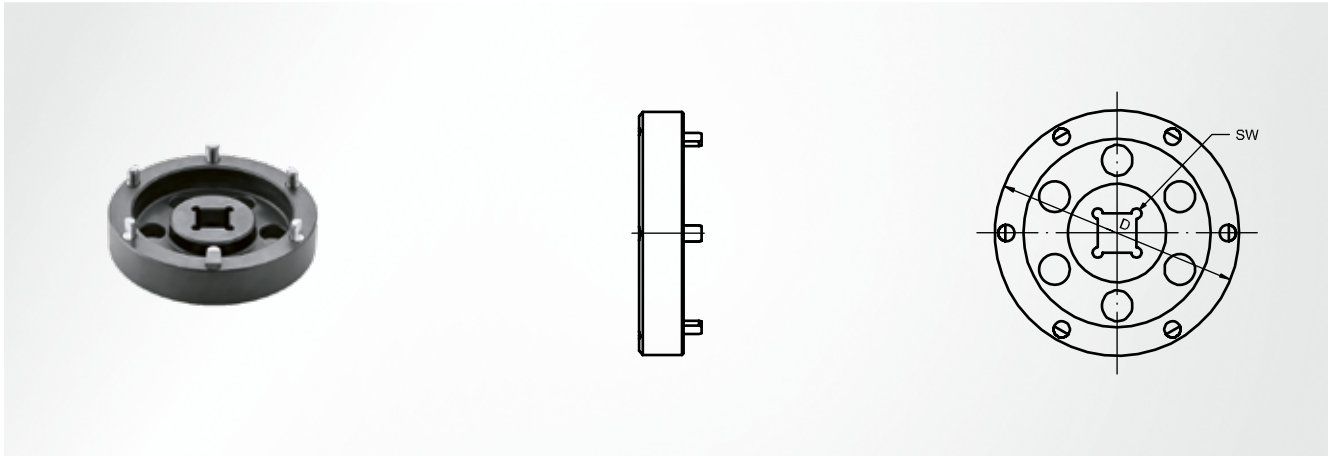
is used when there is an open installation space and standard installation clearance in the event of several cylinders on a manifold plate; when there is a sufficient depression diameter in the event of recessed installation

Cylinder type	D	SW	Item number
005	52	12.7	ST8841 - <b>WKZ-3-005</b>
010	64	12.7	ST8841 - <b>WKZ-3-010</b>
025	82	12.7	ST8841 - <b>WKZ-3-025</b>

Cylinder type	D	SW	Item number
035	100	12.7	ST8841 - <b>WKZ-3-035</b>
055	120	19.0	ST8841 - <b>WKZ-3-055</b>
100	165	19.0	ST8841 - <b>WKZ-3-100</b>

# ST8841-WKZ-41 Socket

for manifold cylinder



## Note

is used in the event of recessed installation or a shortened cylinder installation clearance

Cylinder type	D	SW	Item number
005	52	12.7	ST8841 <b>-WKZ-41-005</b>
010	64	12.7	ST8841 <b>-WKZ-41-010</b>
025	82	12.7	ST8841 <b>-WKZ-41-025</b>

Cylinder type	D	SW	Item number
035	100	19.0	ST8841 <b>-WKZ-41-035</b>
055	120	19.0	ST8841 <b>-WKZ-41-055</b>
100	165	19.0	ST8841 <b>-WKZ-41-100</b>